

# Appendix J: LVS® 95XX

## Factory Calibration Not Found

---

Copyright ©2022  
Omron Microscan Systems, Inc.

All rights reserved. The information contained herein is proprietary and is provided solely for the purpose of allowing customers to operate and/or service Omron Microscan-manufactured equipment and is not to be released, reproduced, or used for any other purpose without written permission of Omron Microscan.

Throughout this manual, trademarked names might be used. We state herein that we are using the names to the benefit of the trademark owner, with no intention of infringement.

## GS1 Solution Partner



## Disclaimer

The information and specifications described in this manual are subject to change without notice.

## Latest Manual Version or Technical Support

For the latest version of this manual, or for technical support, see your local Omron website. Your local Omron website can be located by visiting <https://www.ia.omron.com> and selecting your region from the Global Network panel on the right side of the screen.

## Security Measures

### Anti-Virus Protection

Install the latest commercial-quality antivirus software on the computer connected to the control system and maintain to keep the software up to date.

### Security Measures to Prevent Unauthorized Access

Take the following measures to prevent unauthorized access to our products:

- Install physical controls so that only authorized personnel can access control systems and equipment.
- Reduce connections to control systems and equipment via networks to prevent access from untrusted devices.
- Install firewalls to shut down unused communications ports and limit communications hosts and isolate control systems and equipment from the IT network.
- Use a virtual private network (VPN) for remote access to control systems and equipment.
- Adopt multifactor authentication to devices with remote access to control systems and equipment.
- Set strong passwords and change them frequently.
- Scan for viruses to ensure safety of USB drives or other external storage devices before connecting them to control systems and equipment.

### Data Input and Output Protection

Validate backups and ranges to cope with unintentional modification of input/output data to control systems and equipment.

- Check the scope of data.
- Check validity of backups and prepare data for restore in case of falsification or abnormalities.
- Safety design, such as emergency shutdown and fail-soft operation in case of data tampering or abnormalities.

### Data Recovery

Back up and update data periodically to prepare for data loss.

When using an intranet environment through a global address, connecting to an unauthorized terminal such as a SCADA, HMI or to an unauthorized server may result in network security issues such as spoofing and tampering.

You must take sufficient measures such as restricting access to the terminal, using a terminal equipped with a secure function, and locking the installation area by yourself.

When constructing an intranet, communication failure may occur due to cable disconnection or the influence of unauthorized network equipment. Take adequate measures, such as restricting physical access to network devices, by such means as locking the installation area.

When using a device equipped with the SD Memory Card function, there is a security risk that a third party may acquire, alter, or replace the files and data in the removable media by removing or unmounting the removable media. Please take sufficient measures, such as restricting physical access to the controller or taking appropriate management measures for removable media, by means of locking the installation area, entrance management, etc.

### Software

To prevent computer viruses, install antivirus software on the computer where you use this software. Make sure to keep the antivirus software updated.

Keep your computer's OS updated to avoid security risks caused by a vulnerability in the OS.

Always use the latest version of this software to add new features, increase operability, and enhance security. Manage usernames and passwords for this software carefully to protect them from unauthorized uses.

Set up a firewall (e.g., disabling unused communication ports, limiting communication hosts, etc.) on a network for a control system and devices to separate them from other IT networks.

Make sure to connect to the control system inside the firewall.

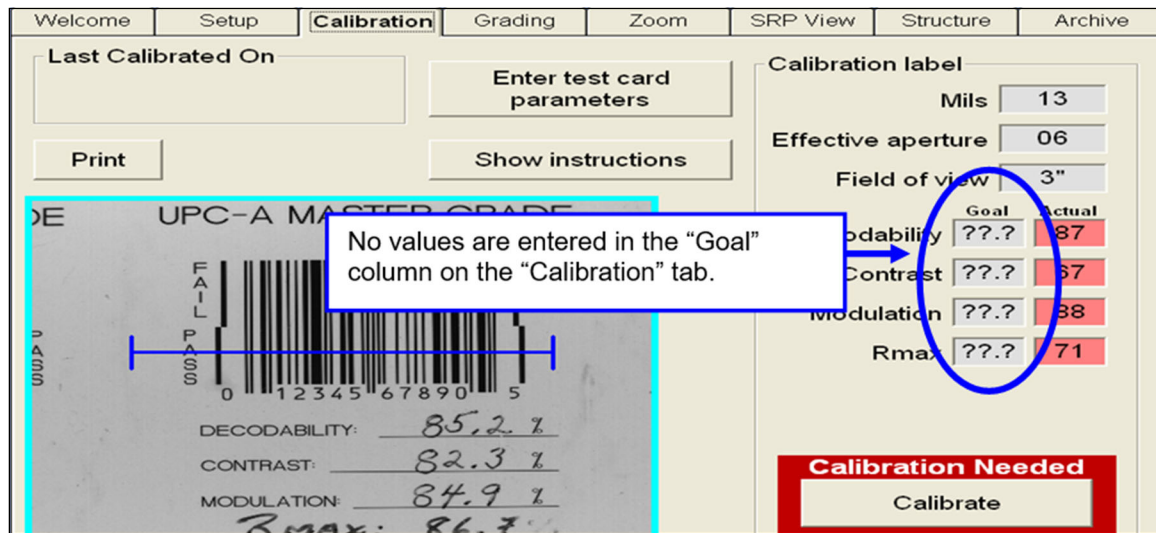
Use a virtual private network (VPN) for remote access to a control system and devices from this software.

## Errors and Error Messages

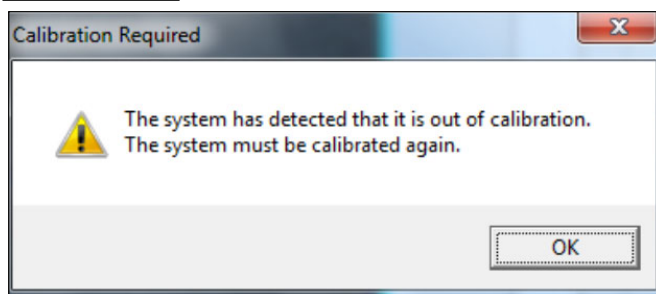
Factory calibration settings must be restored if any of the following errors or error messages occur while operating the LVS-95XX software.

The steps in this document guide you through restoring factory calibration settings using the LVS-95XX installation media supplied with your system purchase. If you do not have the original LVS-95XX installation media, contact your local Omron distributor or Omron Technical Support for assistance.

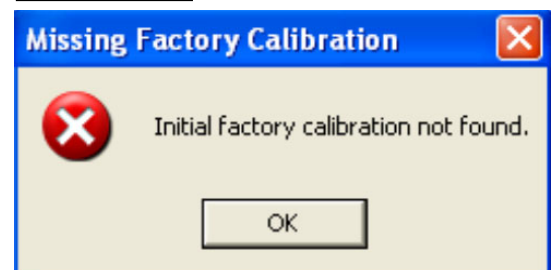
### Error 1



### Error 2



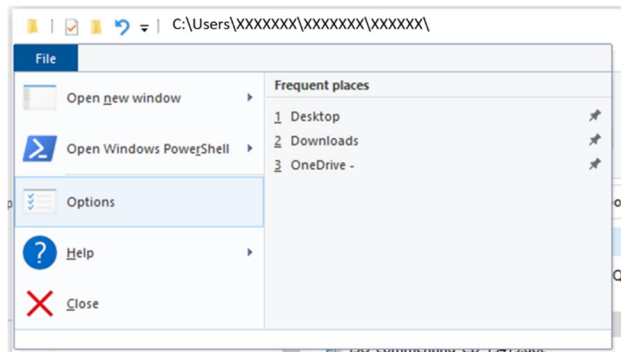
### Error 3



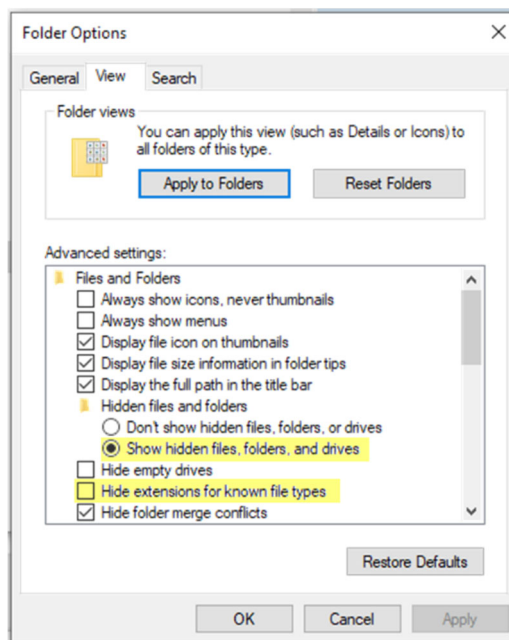
Follow the steps below if any of the above errors or error messages occur while operating the LVS-95XX software.

1. The procedures in this document require you to identify certain folders, files, and file type extensions. To ensure all folders, files, and file type extensions are displayed on your computer:

- a. Click the **"File"** tab and select **Options**.



- b. The Folder Options dialog will be displayed. Select the **"View"** tab.
- Select **Show hidden files, folders, and drives**.
  - Uncheck **Hide extensions for known file types**.
  - Click **"Ok."** All files, folders, drives, and file type extensions now appear in Windows Explorer.



- Log on to the LVS-95XX software. Click the "Archive" tab, and then click the "Change SQL connection" button.

The screenshot shows the LVS-95XX software interface with the 'Archive' tab selected. The interface includes a sidebar with various options, a main table of reports, and a query execution section at the bottom.

**Archive Tab Options:**

- Import image from file
- Export image to file
- Recent reports (last 30 days)
- Delete prior to specific date
- Software version history
- Audit trail report
- Calibration report
- Reference report
- Export reference data
- Change SQL connection**
- Create backup database
- Browse backup database

**Report Table:**

ReportID	SectorID	LclTime	Reference	OverallGrade	De
494	1	22-Dec-2009 10:21		4.0/10.660 (A)	000
495	1	22-Dec-2009 10:21		4.0/10.660 (A)	000
496	1	22-Dec-2009 10:21		4.0/10.660 (A)	000
497	1	22-Dec-2009 10:25		4.0/10.660 (A)	000
498	1	22-Dec-2009 10:36		4.0/10.660 (A)	000
499	1	22-Dec-2009 10:47		2.7/06.660 (B)	012
500	1	22-Dec-2009 10:47		2.7/06.660 (B)	012
501	1	22-Dec-2009 10:47		2.7/06.660 (B)	012
502	1	22-Dec-2009 10:47		2.8/06.660 (B)	012
503	1	22-Dec-2009 10:48		2.8/06.660 (B)	012
504	1	22-Dec-2009 10:48		1.0/06.660 (D)	012
505	1	22-Dec-2009 10:48		2.7/06.660 (B)	012
506	1	22-Dec-2009 10:48		3.7/06.660 (A)	012
507	1	22-Dec-2009 10:48		3.7/06.660 (A)	012
508	1	22-Dec-2009 10:48		3.7/06.660 (A)	012
509	1	22-Dec-2009 10:48		3.7/06.660 (A)	012
510	1	29-Dec-2009 11:08		4.0/06.660 (A)	012
511	1	29-Dec-2009 11:08		4.0/06.660 (A)	012

**Query Section:**

Query:

☒ Preview results in above table  
☐ Generate HTML file (for printing)

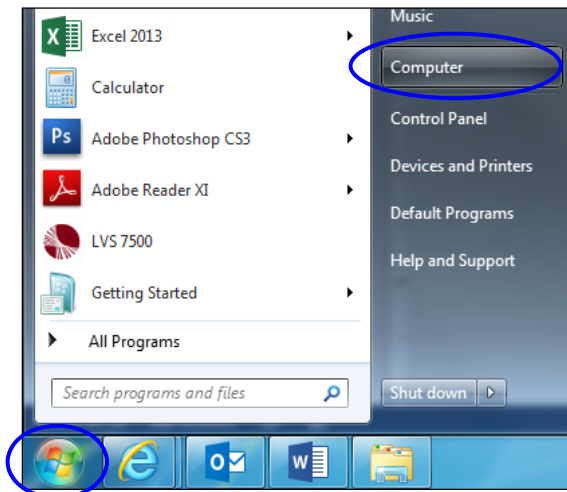
- Make a note of the "Data Source" path; you will access this path in an upcoming step.

The screenshot shows the 'Setup Connection to SQL Database' dialog box. The 'ODBC connection string:' field contains the following text:

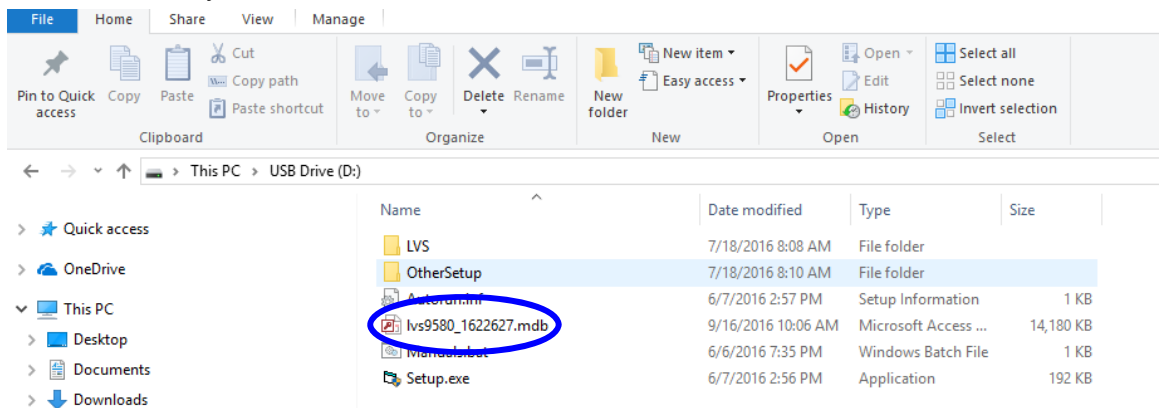
```
Provider=Microsoft.Jet.OLEDB.4.0;
User ID=Admin;
Data Source=C:\Users\Public\LVS-95XX\LVS-95XX.mdb;
Mode=ReadWrite;
Jet OLEDB:System database="";
Jet OLEDB:Registry Path="";
```

- Close the LVS-95XX software and make sure all other computer programs and windows are closed.
- Insert the LVS-95XX installation media supplied with your system into your computer.

6. Click the “Start” button located in the bottom, left corner of the screen, and then click “Computer.”



7. Double-click the USB flash media drive (usually the D:\ drive).
8. Locate the factory .mdb file.

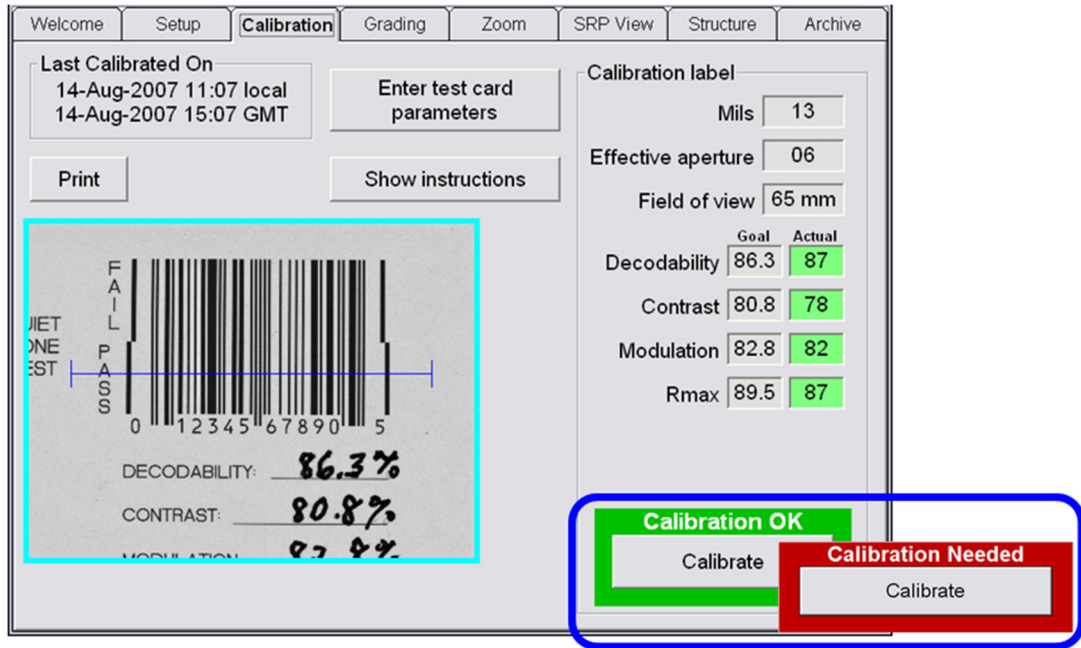


If using LVS-95XX software version **3.0.9J or later**, right-click on the 8-digit numerical .mdb file and select “Copy.”

9. Click on the C:\ drive and navigate to the path noted in step 3. Example: C:\Users\Public\LVS-95XX\LVS-95XX.mdb. Paths differ based on the type of operating system.
10. Right-click on the screen and select “Paste.” The .mdb file (LVS-95XX.mdb or 8-digit numerical .mdb, depending on your LVS-95XX software version) is pasted in the folder.
11. If the 8-digit numerical .mdb is pasted into the folder, rename the file to **LVS-95XX.mdb**.
12. Log on to the LVS-95XX software. Verify that the software calibrates correctly by clicking the “**Calibration**” tab. Place either of the Master Grade barcodes (located on the supplied Calibrated Conformance Standard Test Card) into the center of the field of view, ensuring that the blue line passes through the “PASS” portion of the calibration label. Click “**Calibrate**.”

Successful calibration is indicated by a green “Calibration OK” message in the bottom, right corner of the screen (see example image below). Proceed with step 13.

Failed calibration is indicated by a red “Calibration Needed” message. If calibration fails, contact your local Omron distributor or Omron Technical Support.



13. Verify that the software grades correctly by following the steps below:

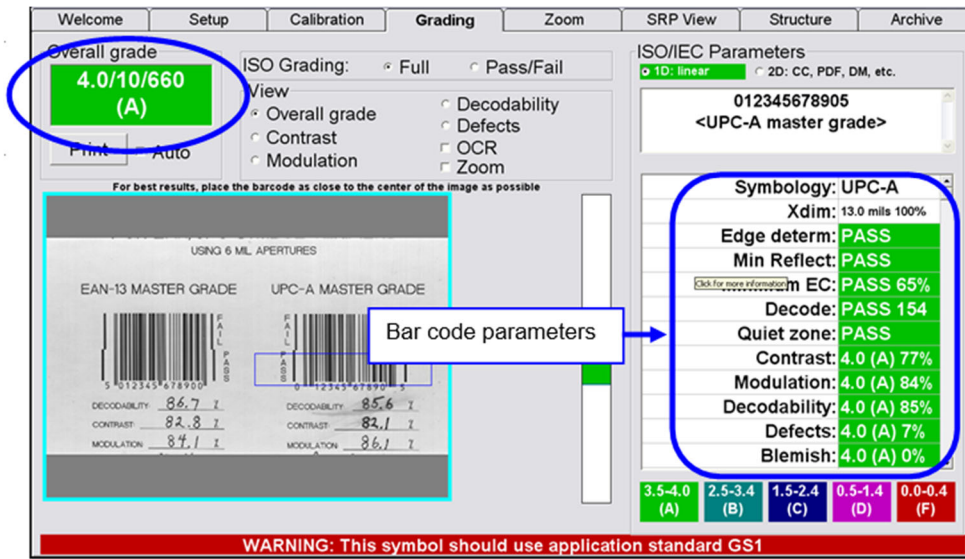
- With the Calibrated Conformance Standard Test Card in the field of view, click the “**Grading**” tab.
- Grade the barcode image by drawing a box around the PASS portion of the barcode, ensuring enough space for the quiet zone.
- Verify that the “Overall grade” and barcode parameters are shaded green (indicating a passing grade); this is an indication that grading works correctly.

---

**Note:** Refer to the “Grading tab” section in the “LVS-95XX Series Barcode Quality Station Operations Manual” (electronic copy located on the installation media) for detailed steps on grading barcodes.

---





14. If any of the above steps fail to work correctly, contact your local Omron distributor or Omron Technical Support.